

TECHNICAL SHEET

Dimensions (mm)	Width 3460 x Depth 1350 x Height 1530
Weight (kg)	1200
Electric Power Supply (v)	According to customer's requirements
Installed Power Capacity (kw)	5.0
Pneumatic Power Supply (bar)	6.0
Pneumatic Consumption (n litres/cycle)	14
Performance	Up to 30 boxes per minute <i>This is an approximate value as the real performance depends on a number of different factors such as for example the number of swabs per box, the quality of the raw materials...</i>
Box Dimensions (mm)	Minimum 85x100x7h Maximum 85x210x60h
Quantity of Swabs per Box	Minimum 10 pieces - Maximum 520 pieces
Type of Box	Cardboard, with gluable sides, with or without re-sealable openings, with or without viewing window
Number of Operators	One operator for the entire line (CF1+SC-03 or CF3+SC-03) or one operator on two opposing lines, depending on the type of format used

The data given in this catalogue are not binding.
We reserve the right to make changes or improvements without any prior notice.



**PACKAGING MACHINERY
ITALY**

Strema s.r.l.

Viale del Lavoro, 8
37060 BUTTAPIETRA - VERONA
ITALY

Tel. +39.045.666.1376

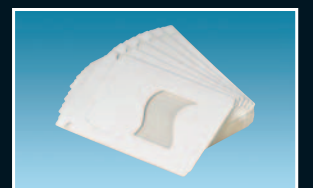
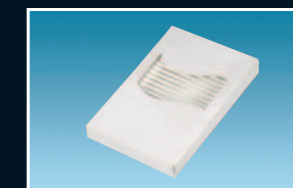
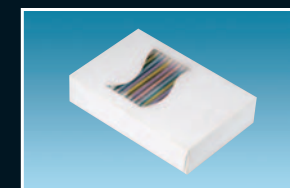
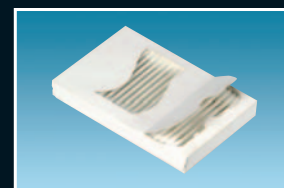
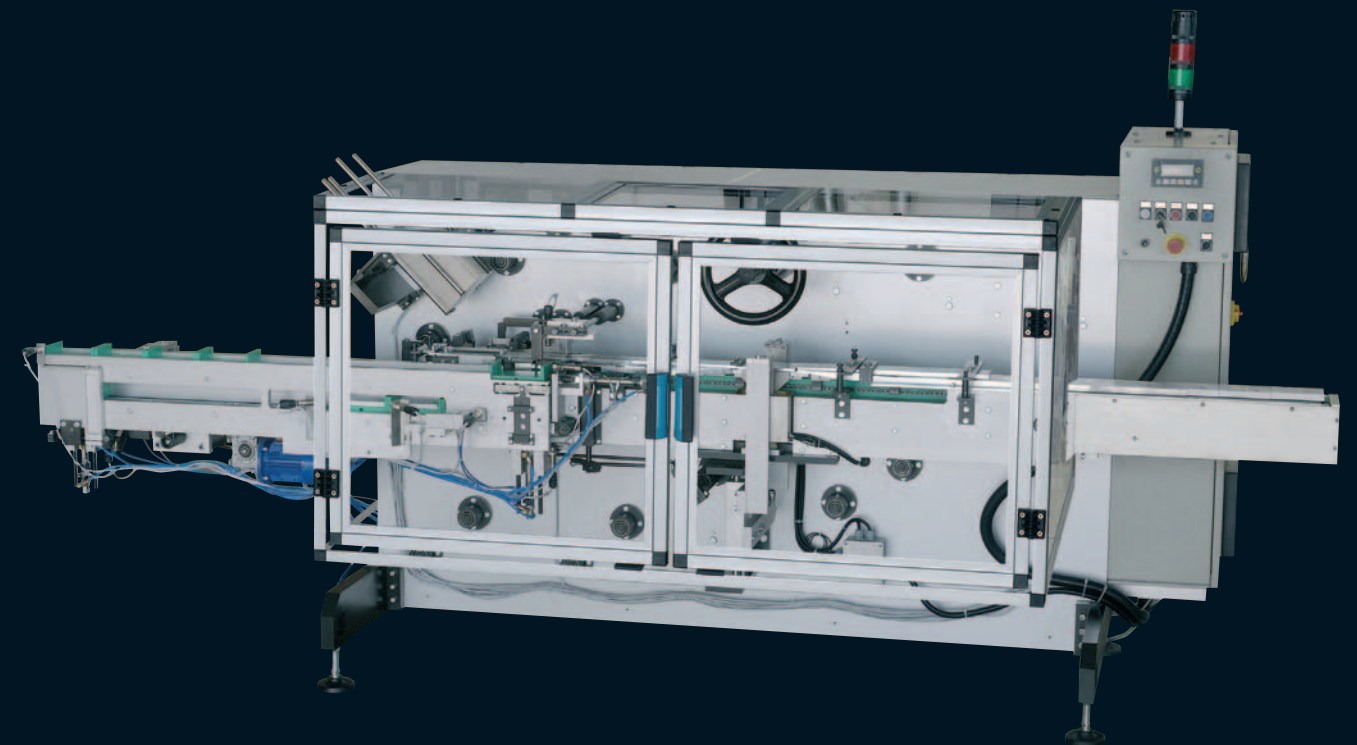
Fax +39.045.666.1381

e-mail: strema@brembenet.com

Internet site: www.strema-machines.com

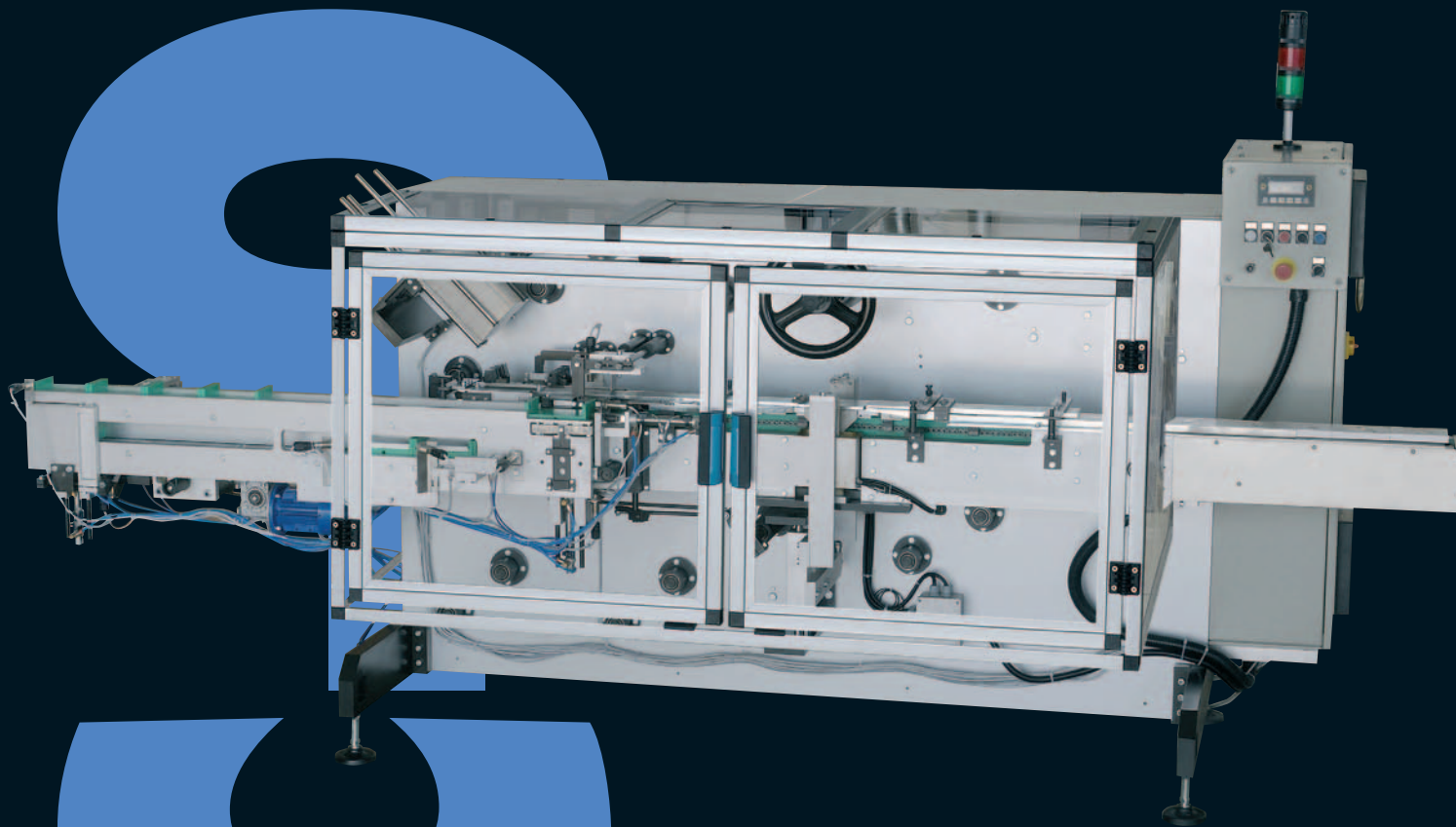
SC-03

FULL AUTOMATIC COTTON SWAB PACKAGING MACHINE



**PACKAGING MACHINERY
ITALY**

STREMA SC-03 EAR CLEANING AND COSMETIC COTTON SWAB PACKAGING MACHINE IN CARTON BOXES



FIELD OF APPLICATION

The Strema SC-03 is a completely automatic machine for packaging cotton swabs used for personal hygiene and/or cosmetic tasks in cardboard boxes. This type of package not only offers industrial-type advantages (maximum utilization of storage spaces, does not require labelling or sealing systems) but also transmits an image of unostentatious elegance to the user. The material used for the box guarantees protection of the environment.

The Strema SC-03 is intended to be connected directly to the Strema CF1 or to the Strema CF3 production machine.

PACKAGING SYSTEM

The product arrives from the Strema CF1 or Strema CF3 in predetermined quantities. From these machines it is deposited in layers in special trays. The boxes are brought from their special magazine to the opening zone by means of a comb-sucker system, then they are positioned between the conveyor chains.

The filling station pushes the product into the boxes. Then the sides are folded, hot glue is applied to the top side, the pack is closed and then automatically discharged from the line.

OPERATING AND CONTROL SYSTEMS

The machine is equipped with an operator panel through which all the parameters necessary for the plant to function well can be set. Moreover, it displays all the alarms generated by the machine. A number of controls are installed on the machine, the main ones being:

- Swab Presence Control
- Swab Overload Control
- Box Level in Special Magazine Control
- Presence of Boxes in the Filling Zone Control

ACCESSORIES AND OPTIONALS

On request, the machine can be fitted with accessories and options; here is a list of just a few of them:

- "Ink Jet" Marker
- Specific Formats
- Stainless Steel Structure or Different Colour
- Remote Diagnosis by Modem (Teleassistance)
- Outlet Conveyor
- Specific Glue Dosing System
- Customised Specifications

